



GMS KAWAWA

**Self-Propelled Self-Elevating
Jackup Barge**

**ABS + A1, Self-Elevating Unit
(Restricted Service) + PAS**

Owner & Operator: Gulf Marine Services | Year of Build: 2007

Maintenance & Commissioning

Well Intervention

Heavy Lift & Decommissioning

Wind Turbine Installation & Maintenance

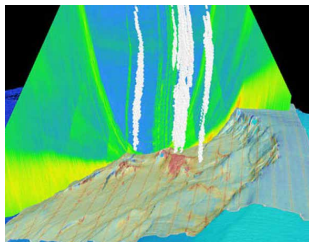


Chartering
chartering@gmsplc.com

STANDARD SPECIFICATIONS



BESPOKE OPTIONAL CAPABILITIES



**GEOTECHNICAL
& GEOPHYSICAL
SUPPORT**



**SPLASH ZONE /
SUBSEA
OPERATIONS**



DECK EXTENSION



**ADDITIONAL
PERMANENT LIVING
QUARTERS**

GMS KAWAWA SPECIFICATIONS

| Main Particulars | | Leg Design | | Tank Capacities | | Fire & Gas Detection System | |
|------------------|--------------------|-----------------|-----------------------------|-----------------|-----------------------|-----------------------------|--------------------|
| LOA / Length BP | 43.20 m | Leg Design | 4 x Watertight Tubular Legs | Fresh Water | 216.12 m ³ | Fire Detection System | CS 4000 Fire Alarm |
| Beam | 34.80 m | Leg Length | 67.9 m | Fuel Oil | 68.72 m ³ | Gas Detection System | MX 52 Oldham |
| Depth | 4.10 m | Max Water Depth | 44.56 m | Ballast Water | 580.95 m ³ | | |
| GRT | 2910 t | Spudcan Area | 27.3 m ² each | Lube Oil | 7.70 m ³ | | |
| NRT | 873 t | | | Dirty Oil | 9.63 m ³ | | |
| Deck Area | 650 m ² | | | Sewage | 15.40 m ³ | | |

| Deck Equipment | | Propulsion & Generators | | Accommodation | |
|----------------|--|-------------------------|------------------------------------|---|--------------------|
| Anchor | 1 x 6.5 t Storm Anchor | Generator Sets | Caterpillar 3 x 800 kw | Single Cabins | 6 |
| Winches | 2 x 80 KN 4 Wire Drum | Emergency Generators | 1 x 99 kw | 2 Berth Cabins | 34 |
| Wire Capacity | 32 mm, 4 x 400 m | Azimuth Thrusters | Aquamaster, 2 x 725 kw | 4 Berth Cabins | 19 |
| Cranes | Liebherr 45 t @ 26 m, 5 t @ 30 m Liebherr 25 t @ 26 m, 5 t @ 30 m | Tunnel Thrusters | Kamewa, 2 x 260 kw | Total POB | 150* |
| | | Speed | 4 Knots | Hospital | 1 |
| | | F.O. Pump | Desmi, 2 x 30 m ³ / hr | Office Area | 100 m ² |
| | | Air Compressor | Sperre, 2 x 17 m ³ / hr | | |
| | | Water Maker | GEFICO 2 x 40 t / day | | |
| | | | | <i>*POB may be expanded using temporary accommodation units on deck and/or room configuration can be tailored to suit client requirements</i> | |

| Jacking System | | Safety Equipment | | Helideck | |
|-----------------|-------------------------|------------------------|--|----------------------|----------------------|
| Jacking Units | 4 (BLM Rack and Pinion) | Lifeboats | 2 x 102 persons | Aircraft | Bell 212 Bell 412 |
| Jacking Speed | 0.70 m / min | Liferafts | 12 x 25 persons | Fire Fighting System | AFFF |
| Leg Length | 67.9 m | CO ₂ System | Engine & Galley & Emergency Gen. Room | | |
| Max Water Depth | 45 m | | | | |

KEY SPECIFICATIONS OF ENTIRE GMS FLEET

| Name of Vessel | Propulsion | Standard POB | Leg Length | Variable Load (VDL) Elevated/Jacking | Deck Area | Main Crane Capacity |
|----------------|--------------------|--------------|------------|--------------------------------------|---------------------|---------------------|
| Kamikaze | Self Propelled | 150 | 67.9m | 750t / 450t | 650 m ² | 36t |
| Kawawa | Self Propelled | 150 | 67.9m | 750t / 450t | 650 m ² | 45t |
| Kikuyu | Self Propelled | 150 | 67.9m | 750t / 450t | 650 m ² | 45t |
| Kudeta | Self Propelled | 150 | 67.9m | 750t / 450t | 650 m ² | 45t |
| Keloa | Self Propelled | 150 | 67.9m | 750t / 450t | 650 m ² | 45t |
| Pepper | Self Propelled | 150 | 76.9m | 800t / 900t | 800 m ² | 75t |
| Shamal | DP2 Self Propelled | 150 | 75m | 1,550t / 900t | 800 m ² | 150t |
| Scirocco | DP2 Self Propelled | 150 | 75m | 1,550t / 900t | 800 m ² | 150t |
| Sharqi | DP2 Self Propelled | 150 | 75m | 1,550t / 900t | 800 m ² | 150t |
| Endurance | DP2 Self Propelled | 210 | 104m | 1,855t / 1,855t | 1035 m ² | 300t |
| Endeavour | DP2 Self Propelled | 246 | 94.2m | 1,650t / 1,650t | 1035 m ² | 230t |
| Enterprise | DP2 Self Propelled | 194 | 104m | 1,750t / 1,750t | 1035 m ² | 400t |
| Evolution | DP2 Self Propelled | 150 | 94.2m | 1,700t / 1,700t | 667 m ² | 200t |

COMPARATIVE VESSEL CAPABILITIES

| Description of capabilities | GMS Fleet | Jackup Drilling Rigs | Semi-sub/ Construction Vessels | Accommodation Rigs |
|---------------------------------------|-----------|----------------------|--------------------------------|--------------------|
| Construction & Maintenance | | | | |
| Construction & installation support | ✓ | × | ✓ | × |
| Maintenance support | ✓ | × | ✓ | × |
| Diving support | ✓ | ✓ | × | × |
| Accommodation | ✓ | × | ✓ | ✓ |
| Remove/decommission topside modules | ✓ | × | ✓ | × |
| Well Servicing & EOR | | | | |
| Coiled tubing | ✓ | ✓ | × | × |
| Wireline | ✓ | ✓ | × | × |
| Well workover | ✓ | ✓ | × | × |
| Well testing/ early production | ✓ | ✓ | × | × |
| Wind | | | | |
| Installation | ✓ | × | ✓ | × |
| Maintenance & repair | ✓ | × | ✓ | × |

GULF MARINE SERVICES PLC



Rest of the World

Office 403, International Tower
24th (Karama) Street
PO Box 46046
Abu Dhabi, UAE
T +971 2 502 8888
F +971 2 555 3421

Saudi Arabia

2nd Floor, Abdullah Fouad Tower
King Fahd Road, Al Khobar
Eastern Province
PO Box 31411, KSA
T +966 13 8064070
F +966 13 8102100

Qatar

11th Floor, Marina Twin
Towers Street 305, Lusail
P.O. Box 301477
Doha, Qatar
T +971 2 502 8801
F +971 2 555 3421